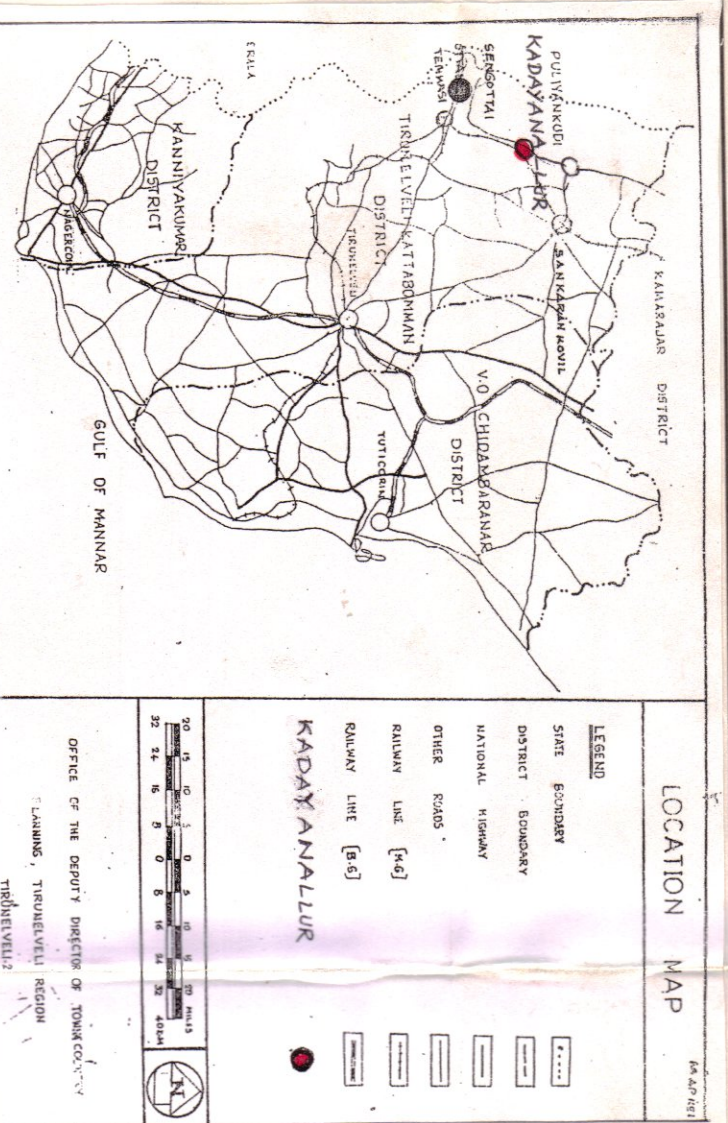


PROPOSED LAND USE 2011



LEGEND	
	L.P.A. BOUNDARY
	VILLAGE BOUNDARY
	SURVEY BOUNDARY
	RAILWAY LINE
	BROAD GAUGE
	NATIONAL HIGHWAYS
	STATE HIGHWAYS
	MAJOR DISTRICT ROAD
	HILLOCKS
	RESERVED FOREST
	WATER BODIES

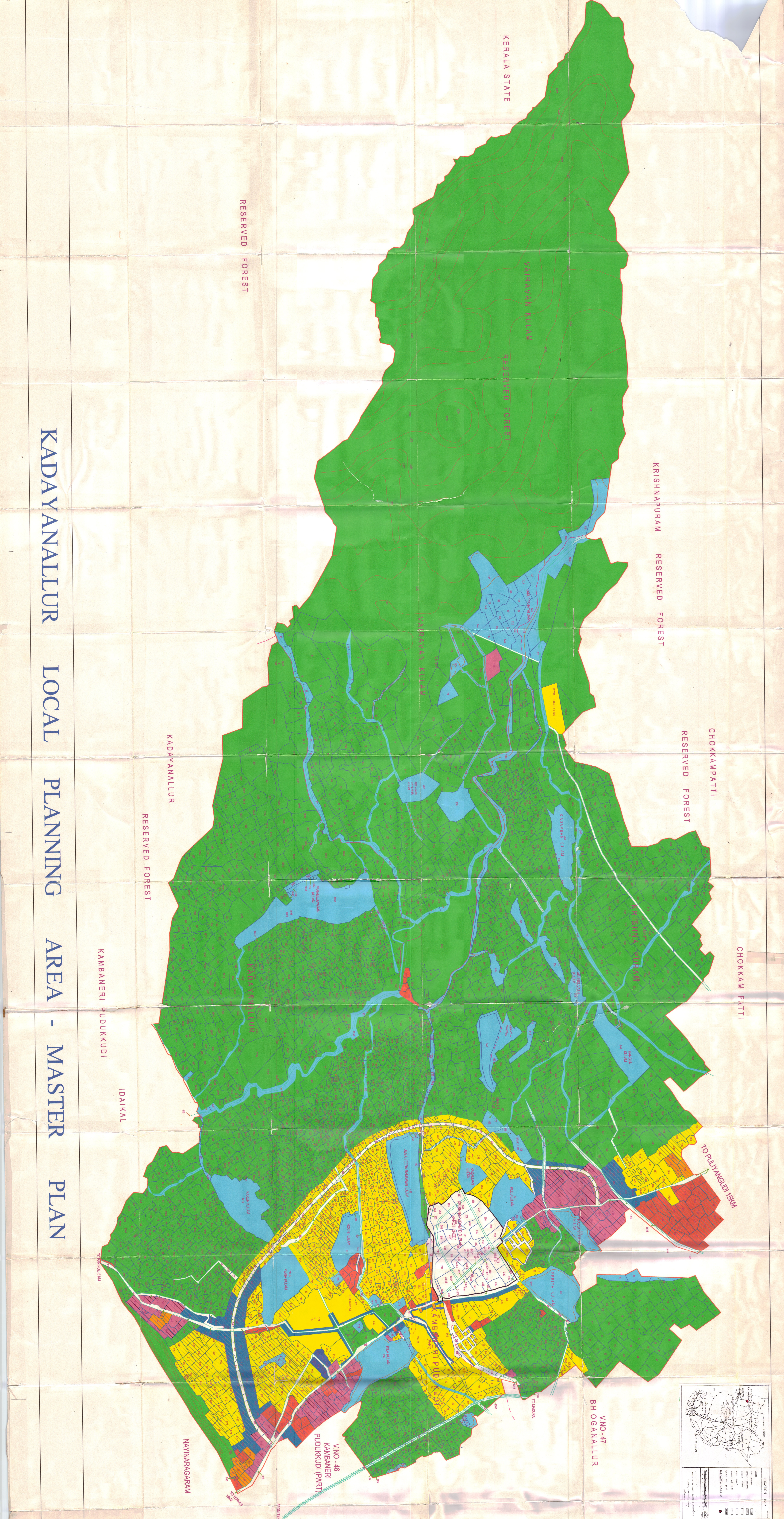
USE ZONE	EXISTING	PROPOSED
I. RESIDENTIAL		
a. PRIMARY RESIDENTIAL		
b. MIXED RESIDENTIAL		
II. COMMERCIAL		
III. INDUSTRIAL		
a. CONTROLLED INDUSTRIAL		
b. GENERAL INDUSTRIAL AND HAZARDOUS		
c. SPECIAL INDUSTRIAL		
IV. EDUCATIONAL		
V. PUBLIC AND SEMI PUBLIC		
VI. AGRICULTURAL		
PROPOSED BYPASS ROAD		
D.D. PLAN BOUNDARY		

NOTE:
 IN KADAYANNALLUR VILLAGE, THE S.NOS 579, 880, 881, 885, 887 TO 893, 916 TO 919, 927, 928, 932, 933 ARE MINGLED WITH S.NO 860 AND THE S.NOS 1819 TO 1922 ARE MINGLED WITH S.NO 1809.

SCALE DETAILS:
 0.4 0.8 1.2 1.6 2.0 2.4 2.8 3.2 3.6 4.0 4.4 4.8 5.2 5.6 6.0 6.4 6.8 7.2 7.6 8.0 8.4 8.8 9.2 9.6 10.0
 0.1 0.2 0.3 0.4 0.5 0.6 0.7 0.8 0.9 1.0 1.1 1.2 1.3 1.4 1.5 1.6 1.7 1.8 1.9 2.0
 KM MILES

	EXECUTIVE AUTHORITY KADAYANNALLUR LOCAL PLANNING AUTHORITY		DEPUTY DIRECTOR OF TOWN AND COUNTRY PLANNING TIRUNELVELI
	DEPUTY DIRECTOR OF TOWN AND COUNTRY PLANNING CHENNAI		APPROVAL, DIRECTOR OF TOWN AND COUNTRY PLANNING CHENNAI
	COMMISSIONER OF TOWN AND COUNTRY PLANNING CHENNAI		OFFICE OF THE DEPUTY DIRECTOR OF TOWN AND COUNTRY PLANNING TIRUNELVELI

KADAYANNALLUR LOCAL PLANNING AREA - MASTER PLAN



KERALA STATE

170 cm X 85 cm

